



Total Solution Provider in Saw Device

SL08520AV

85.1 MHz IF SAW Filter
20.50 MHz Bandwidth
Revision 0: 5. August. 2008



- Electrical Characteristics
 - Package Dimensions
 - Testing Environment
 - Frequency Characteristics
-

SAWNICS Inc.

460 Cheonheung-ri, Seonggeo-eup, Cheonan-si, Chungcheongnam-do, 330-836 / Korea.
Tel: +82 41 550 9372 / Fax: +82 41 550 9399 / www.sawnics.com



□ Electrical Characteristics

Maximum Ratings

Parameters Description	Unit	Minimum	Typical	Maximum
Operation Temperature Range	°C	-20	-	70
Storage Temperature Range	°C	-40	-	85
Maximum DC Voltage	V	-	-	10
Maximum Input Power	dBm	-	-	10
Source Impedance (single ended) ⁽¹⁾	Ω	-	50	-
Load Impedance (single ended) ⁽¹⁾	Ω	-	50	-
Package type & size	V			
Length x Width	mm ²	-	13.3 x 6.5	-
Height	mm	-	-	1.8

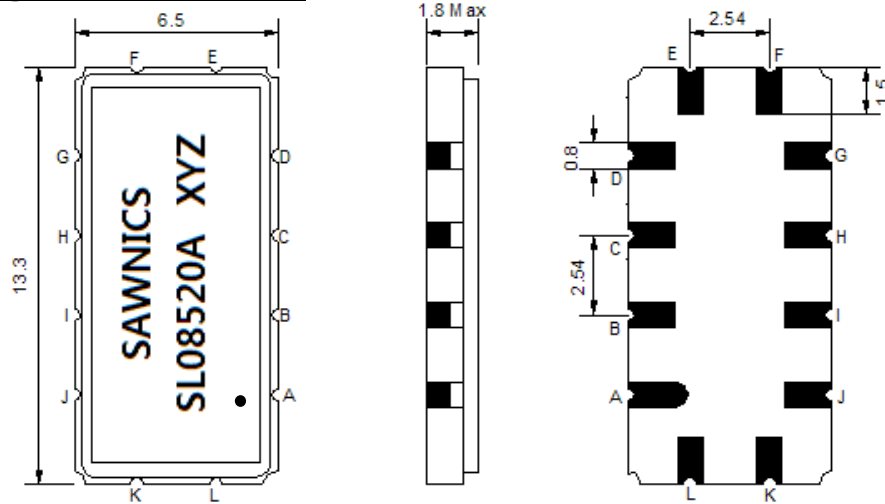
Electrical Specification

Parameters Description	Unit	Minimum	Typical	Maximum
Center Frequency (Fo)	MHz	-	85.1	-
Insertion Loss at Fo	dB	-	11.50	13.00
Group Delay Variation at Fo ± 9.22 MHz	nsec	-	35	50
Absolute Delay at Fo	usec	-	0.88	-
Passband Ripple Variation at Fo ± 9.22 MHz	dB	-	0.40	0.95
Bandwidth at -1dB	MHz	-	20.50	-
Bandwidth at -3dB	MHz	21.20	21.35	-
Bandwidth at -40dB	MHz	-	25.10	25.30
Ultimate Rejection	dB	40	48	-
Temperature Coefficient	ppm/°C	-	-86	-

Notes : (1) With Matching Network (Ref. Testing Environment Circuit as shown below).

Those impedances could be modified with different impedance values and/or structures, if necessary.

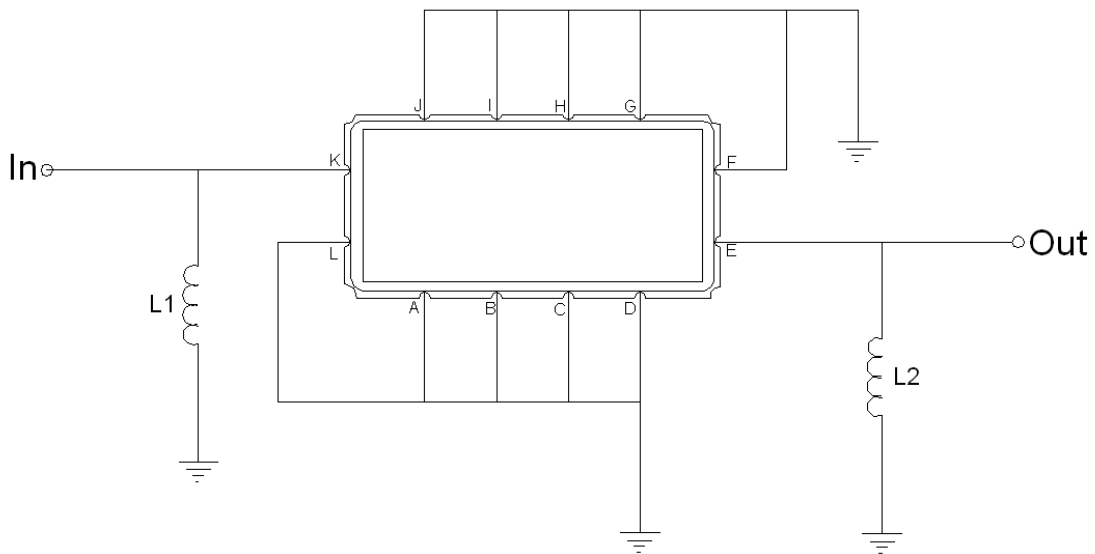
Package Dimensions



- ① SAWNICS: Brand
- ② SL08520A: Model Name
- ③ X : Date Code (Year)
- ④ Y : Date Code (Month)
- ⑤ Z : Date Code (Date)
- : Index Dot

Pin Description	
A, B, C, D, F, G, H, I, J, L	Ground
K	Input
E	Output

Testing Environment



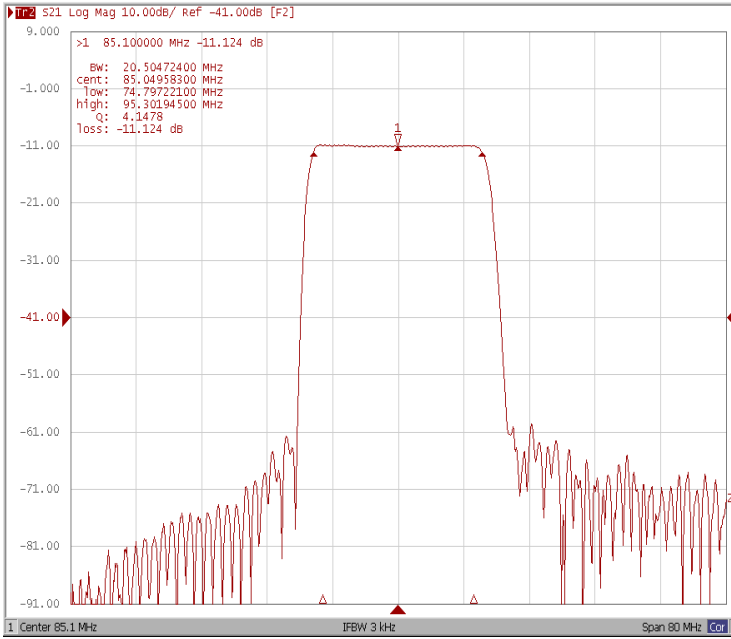
Test Fixture & Values	
Input	L1 = 56 nH
Output	L2 = 68 nH
Source/Load Impedance	50 Ω



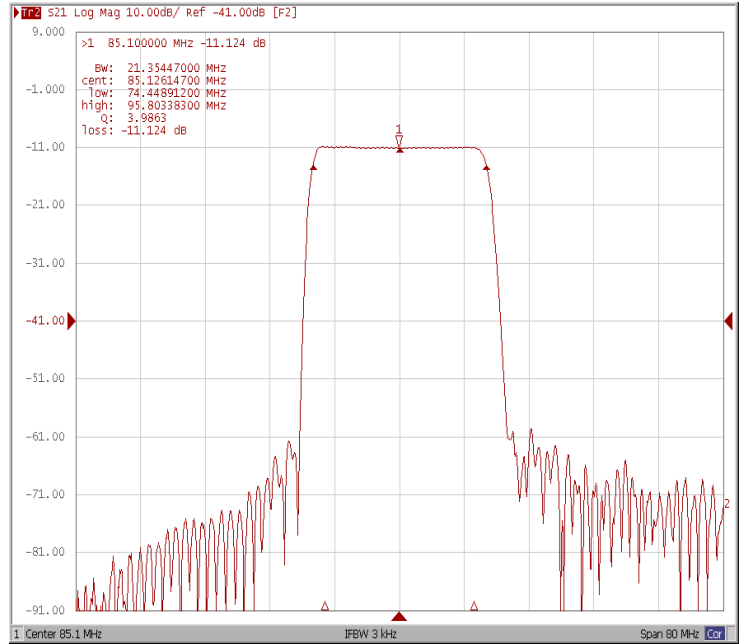
Frequency Characteristics

Frequency Response

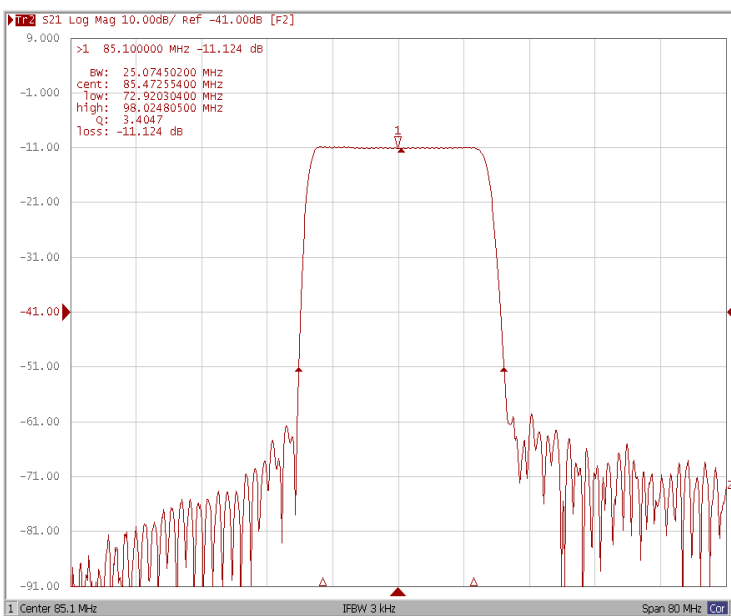
Bandwidth at -1.0 dB



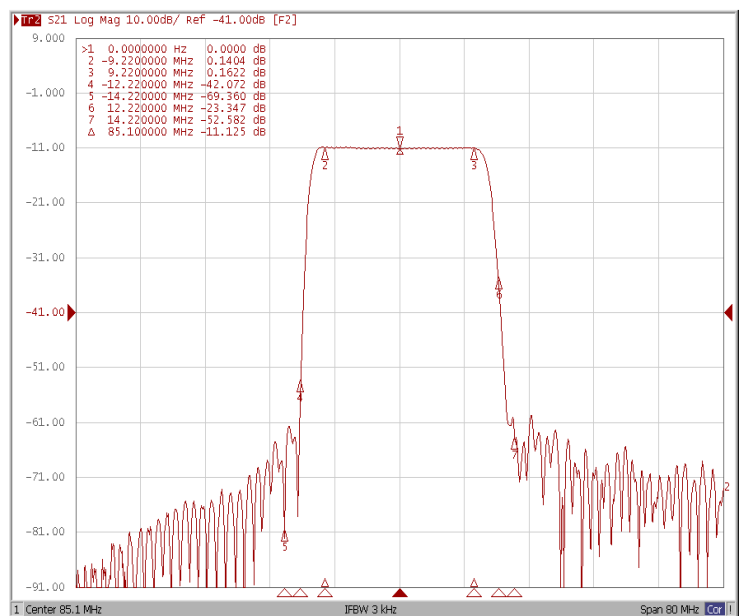
Bandwidth at -3.0 dB



Bandwidth at -40.0 dB



Attenuation

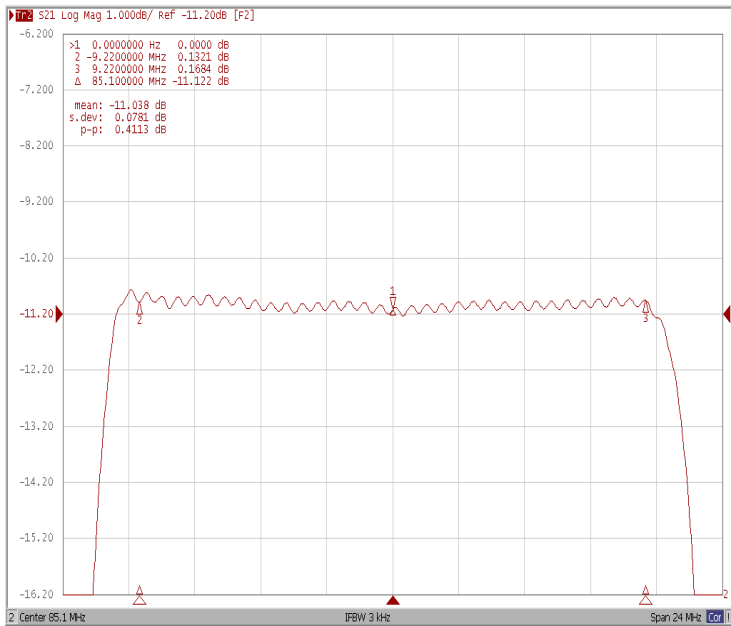




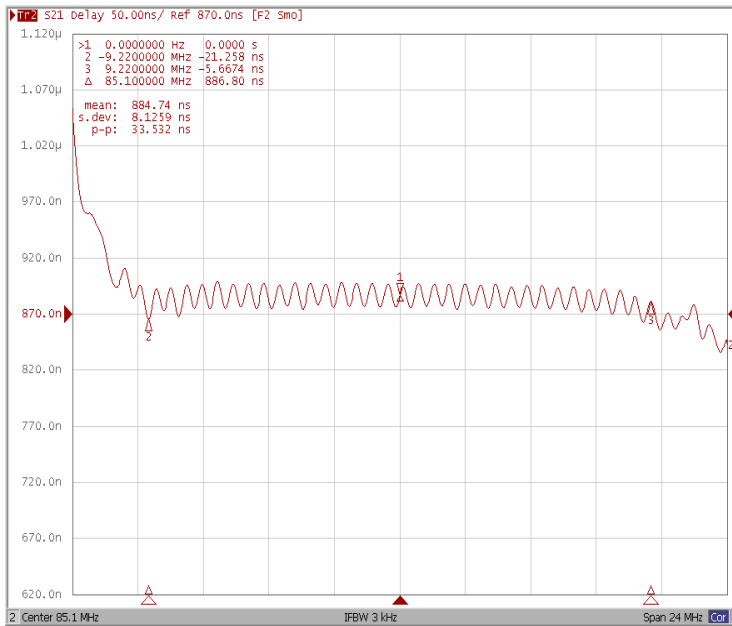
Frequency Characteristics

Frequency Response

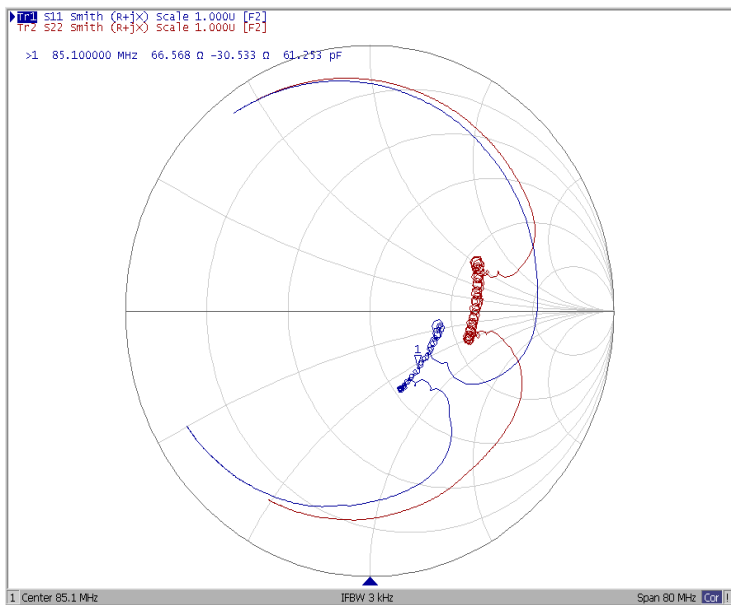
Ripple Variation Fo±9.22MHz



Group Delay Variation Fo±9.22MHz



Smith Chart



VSWR

